

Taylor "Big Red"

THC Series Cushion Tire Lift Trucks



THC-300S



THC-400L

Features:

- Hydrostat and LP options are available on some models;
- Cummins Turbocharged diesel engines are standard
- One-piece, flip down instrument panels
- 12-volt electrical systems, 100 amp alternators
- 3-speed, fully reversing, modulated, powershift transmissions with inching control and electric shift control
- Heavy-duty, planetary drive axles
- Steer axles have a single, double action, improved steer cylinder completely protected in the axle housing
- Hydrostatic power steering
- The all-welded frames have integral counterweights
- 2-stage telescopic direct lift mast with free lift with 3-stage telescopic lift cylinder.
- Heavy-duty battery and radiator

24" Load Center Models:
TCO-180 / THC-250S / THC-300S
30" Load Center Models:
THC-400L
36" Load Center Models:
TC-520
42" Load Center Models:
THC-800 (Coil) / THC-850 (Coil)





Spacious operator's stations



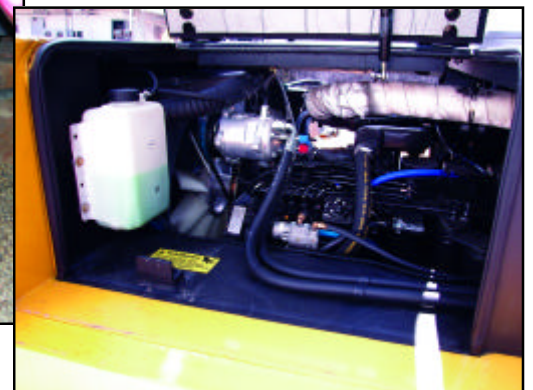
Operator visibility



Gull wing hood allows for easy service access to engine compartment and slide-out battery.



Steer cylinder is completely protected in axle housing.



Cummins B5.9-C160 Turbocharged Diesel Engine

Standard Equipment THC-250S/300S/400L (not applicable to TCO-180/THC-800/THC-850)

Cummins B5.9-C160 Turbocharged Diesel Engine • Lockable Fuel Cap w/Strainer • Donaldson Dry-type Air Cleaner w/Safety Element and Restriction Indicator • Muffler w/Stack Guard • 12-Volt Electrical System w/100 Amp Alternator • Heavy-duty Battery • Anti-restart Ignition Switch • Tilt Steering • Lighted Instruments • Electric Horn • Keyswitch-actuated Amber Strobe Light • Reverse-actuated Backup Alarm • Forward Alarm • Rear View Mirrors • Transmission - 3 speed w/Inching, Modulated, Electric Shift Control • Taylor Steer Axle • Planetary Drive Axle • Air Brakes • Hydrostatic Power Steering • Pilot Operated Controls • Tires: Drive: 36 x 20 x 30 Poly Steer: 28 x 12 x 22 Poly • Center Mount Operator Station and Overhead Guard w/Skyview Window and Rear Windshield • Adjustable Vinyl Covered Mechanical Suspension Seat w/Flip-down, Adjustable-angle Arm Rests and Seat Belt • Hydraulic Strainers and Filters in Tank • Accumulator in Lift Circuit • THC-250S/300S: 96" Telescopic Direct Lift Mast w/40" Free Lift, Type C Carriage 58" wide, 3"x8"x48" Forks • THC-400L: 96" Telescopic Direct Lift Mast w/48" Free Lift • Type C Carriage 65" Wide • 3.5" x 8" x 60" Forks • Tires: Drive THC-250S 28x16x22 Poly Steer 22x9x16 Poly Drive THC-300S 28x16x22 Poly Steer 22x10x16 Poly • THC-250S/300S: 96" Telescopic Direct Lift Mast w/40" Free Lift • Type C Carriage 58" Wide • 3"x8"x48" Forks



TAYLOR MACHINE WORKS, INC.

650 North Church Avenue

Louisville, Mississippi 39339-2017

(662) 773-3421 / Fax (662) 773-9146

www.taylorbigred.com