



TAYLOR MACHINE WORKS, INC.

# TX SERIES

48-IN. LOAD CENTER MACHINES

you  
can  
depend  
on

*Big Red*



**TX-520M\***

### TX Series Models and Capacities

TX-520M	(52,000-lb. Cap. at 48" L.C., 170" WB)
TX-550M	(55,000-lb. Cap. at 48" L.C., 170" WB)
TX-650L	(65,000-lb. Cap. at 48" L.C., 180" WB)
TX-700L	(70,000-lb. Cap. at 48" L.C., 190" WB)

ENGINEERING DONE RIGHT THROUGH

**FAITH VISION WORK**

\*Featured truck is shown with available options.



# TX SERIES

Taylor Machine Works was built on the premise, "We engineer and build what you need." This is just as true today as it was in 1927. We design, engineer, and manufacture equipment tailored specifically to meet the material handling needs of your business.

Taylor Machine Works is acknowledged to be one of the top lift truck manufacturers in the world today, and reaffirming that reputation is the TX Series of 48-in L.C. lift trucks.

**Telescopic ULTRA-VU mast**  
Optional mast choices available  
Choose from different configurations  
to best fit your material handling  
needs

**Nested channel construction**  
Nested leaf chains  
(TX-520M and TX-550M only)

**Heavy-duty carriage**  
Minimal maintenance and more  
resistant to dynamic/shock loads  
with rough terrain, high lift,  
and/or offset loads.  
Optional sideshift shown

**Mast mounted forward  
facing work lights**  
Standard

**TX-520M and TX-550M mast tilting**  
15° forward and 10° backward  
**TX-650L and TX-700L mast tilting**  
12° forward and 12° backward

**Overhead tilt cylinders**  
Less mast rail twisting than low  
mount tilt cylinder designs  
Greater mast stability

**Pin mounted full width adjustable forks**  
Optional fork positioning shown



The TX Series features the most dependable and diverse assortment of mast and carriages in its class. Known for their innovative design, these masts give you the confidence in knowing it will work every time you need it. Even when maintenance is required you can feel safe knowing our engineers have designed our mast and carriages to be as easy to maintain and repair as possible.

The telescopic, ULTRA-VU mast features a nested channel construction. The double-acting lift cylinders are positioned to the rear of the mast rails while the multi-leaf lift chains are nested inside the mast rails of the TX-520M through TX-550M models (TX-650L and TX-700L have visible chains). Two lifting eyes and bolt-on caps permit safe, easy removal of the mast in the event that repair is needed.



The pin-mounted forks are hammer forged from heat treated steel with increased thickness in critical heel sections. The forks are fully adjustable from full width of carriage to +/-2-in. Lengths and widths vary depending on your particular needs and model type.



The mast and carriage main rollers are common and use Timken® tapered roller bearings. Chain rollers use sealed ball bearings. Common, cast nylon, side thrust pads are adjustable to compensate for wear.

### Carriage Groups

100-in standard  
(TX-520M and TX-550M)  
120-in standard  
(TX-650L and TX-700L)

### Simple design-

- bolt-on housing
- Timken tapered roller bearings
- cast nylon side thrust pads
- shims, if necessary

**Minimal maintenance with more resistant to dynamic/shock loads with rough terrain, high lift, and/or offset loads**



Wide stance for more stable and confident handling

The TX Series of 48-in L.C. lift trucks can boast 4 models to choose from, with lift capacities ranging from 52,000-lbs to 70,000-lbs.

# LIFT WITH CONFIDENCE

# TX SERIES

The TX Series 48-in. L.C. line of industrial pneumatic lift trucks was designed and engineered with the operator and service personnel in mind.

Each model in the TX Series of lift trucks uses a Tier Certified Cummins® electronic turbocharged, charge air aftercooled (air to air) diesel engine. Standard engine features include electronic diagnostic and maintenance monitor, fuel/water separator and engine/transmission protection systems, improved fuel economy, and reduced emissions.

The TX Series comes standard with top of the line features such as:

- TIER certified high output engines
- High capacity cooling systems
- Heavy-duty transmissions
- Heavy-duty planetary drive axles
- Heavy-duty, proven design steer axles
- TICS (Taylor Integrated Control System)
- All-welded steel chassis



Battery cut-off switch



Dual element air cleaner with restriction indicator

### Sliding engine hood

Easily removable doors for greater access (All service and daily checks can be made easily from running boards)



### Heavy-duty steer axle

is a single hydraulic cylinder design with heavy-duty links from the cylinder ram directly to tapered roller bearing mounted spindles.

Positive rim mountings

Vertical shielded exhaust

Both the fuel and hydraulic tank are easily removable

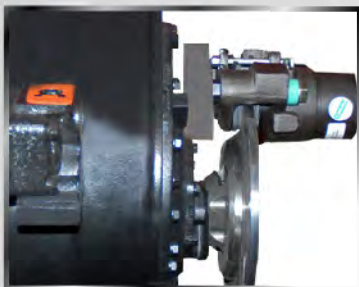
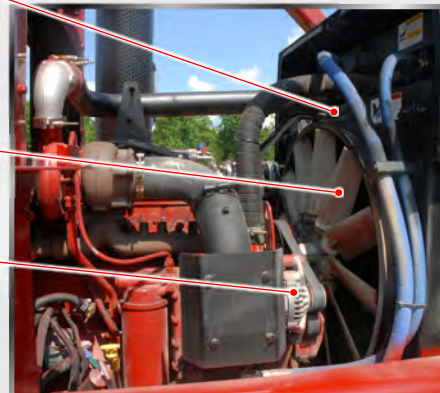


- Hydraulic tank –**
- easily removable
  - heavy gauge steel wall
  - serviceable filter element
  - tank mounted breather
  - internal suction screen
  - 82-gallon capacity (TX-520M & TX-550M)
  - 114-gallon capacity (TX-650L & TX-700L)
- Full flow, in-tank, 10-Micron return filtration**

**Engine mounted sealed fan shroud insures maximum air flow**

**High out-put pusher fan**

**160 amp alternator 12V electrical system**



**Transmission output shaft disc mounted, parking brake Spring on – Hydraulic off Instrument panel mounted control**

**Easily removable side panels** for better access to components  
Easy, under cab, access to the junction box and to reset circuit breakers  
Sealed electrical connectors  
All wiring is color and number coded

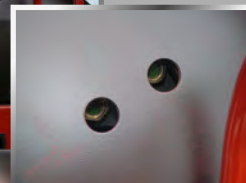
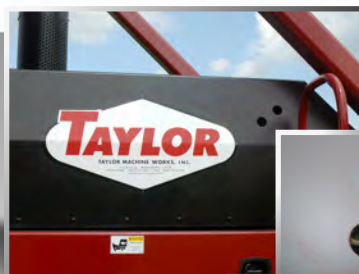
**Internal, force-cooled hydraulic actuated service brakes**  
Wet disc brake oil and hydraulic oil are cooled by hydraulic cooler

## ENGINE

- Tier Certified Cummins electronic, low emissions (see specification sheet for engine detail)
- Lower fan speed and engine speed for less noise
- Electronic diagnostics on engine with fault code history for easy diagnostics and repair
- Built-in emergency shut-down system for engine and transmission
- All service and daily checks can be made easily from the running boards
- High capacity charge air engine coolant, transmission oil and hydraulic oil cooling system
- Easily serviceable bolted 3-section cooling system

## TRANSMISSION

- Heavy-duty 3-speed Powershift transmission
- High capacity 12-plate clutch system for added durability
- Operator controlled hydraulic inching for precise vehicle position control
- Automatic Powershift Control (APC)
- Full directional modulation for soft directional changes
- Transmission oil cooler is part of the bolted 3-section cooling system
- Cooler has wide fin spacing to resist plugging
- Remote mounted filter to reduce oil spills
- Flex-plate drive
- Full width transmission mount goes from rail to rail in chassis for a more stable drivetrain



**Engine coolant** levels can be checked without having to open the engine compartment via the view ports in the engine hood

**Heavy-duty bolted planetary drive axle, force-cooled wet disc brakes**  
Brake saver system does not allow operator to drive through parking brakes

# TX SERIES



The TX Series features a spacious, all steel cab with increased leg and head room, sound deadening rubber mat flooring, tilt steering wheel, simple T-shaped dash with hinge down instrument panel, fingertip electric joystick controls, and optional climate control system for operator comfort and convenience.

The tilt steering column and the adjustable full-suspension air-ride seat places your operator in the utmost comfort. The right-side armrest's adjustment capabilities allows even the most demanding operator to place the truck's controls within easy reach. The fingertip controls, on the the low effort joystick, allow the operator to control the mast and carriage with ease and comfort. The floorboards are light weight and easily removed.

This blend of ergonomics and technology will help your operator be more efficient with the job at hand... handling materials.



**Two brake pedals**  
left – brakes and inching  
right – brakes only



**Comfortable adjustable arm rest**  
with fingertip joystick control for  
smooth precise handling



**Spacious uncluttered cab**  
with tilt steering, hinge-down dash,  
climate controls and adjustable  
seating  
Premium vinyl or cloth seat that  
rotates 15° left and 20° right



**Easy to understand diagnostic display.** TICS (Taylor Integrated Control System) using CANbus technology is standard on the TX Series.



**Dual panoramic interior rear view mirrors** standard  
Dual external side view mirrors standard  
Optional pedestrian camera and monitor



**FAITH**



**VISION**



**WORK**

**COMFORT & SAFETY**

# 48-IN. LOAD CENTER MACHINES



**Forward activated alarm**



**Unobstructed rear view**  
The air snorkel and shielded exhaust are mounted on the corners of the cab to keep the view open.



**Overhead rear work lights**  
for improved safety and visibility  
Key-switch actuated amber strobe light  
Reverse activated alarm



**External side view mirrors**  
standard

**Optional air conditioning**  
with clean air intake on right side of cab

**TaylorMax filter**  
Option shown

**Sloped counterweights**  
for improved rear visibility

**Self cleaning, anti-slip, steps**  
3-point mounting and dismounting

**Extra large, shock absorbing, center mounted cab** for operator comfort and noise reduction  
Tinted glass throughout the cab

**QUALITY ASSURED AND**



# The Best Support In The World!



No-one can match our record for service and reliability.

Worldwide customer service, backed by over 83 years of Taylor® customer satisfaction and trust.



**Sudden Service, Inc.**  
649 N. Church Ave.  
Louisville, MS 39339-2022  
Phone (662) 773-8056  
Fax (662) 773-9157  
[suddenserviceinc.com](http://suddenserviceinc.com)

you can depend on

“*Big Red*”

is a personal and collective commitment from the Taylor "Big Red" Team® to every customer. Customer needs and expectations are the main priorities for Taylor® engineering, manufacturing, marketing, and service organizations. Sudden Service, Inc.® and our worldwide Taylor® dealer network are ready to respond to your requests for support twenty-four hours a day, seven days a week!

Genuine Parts • Unbeatable Service • Trusted Support



**Taylor Machine Works, Inc.**  
650 North Church Avenue  
Louisville, Mississippi 39339-2017  
Phone (662) 773-3421 Fax (662) 773-9146  
[taylorbigred.com](http://taylorbigred.com)

TMW-BR-110 9/15/10